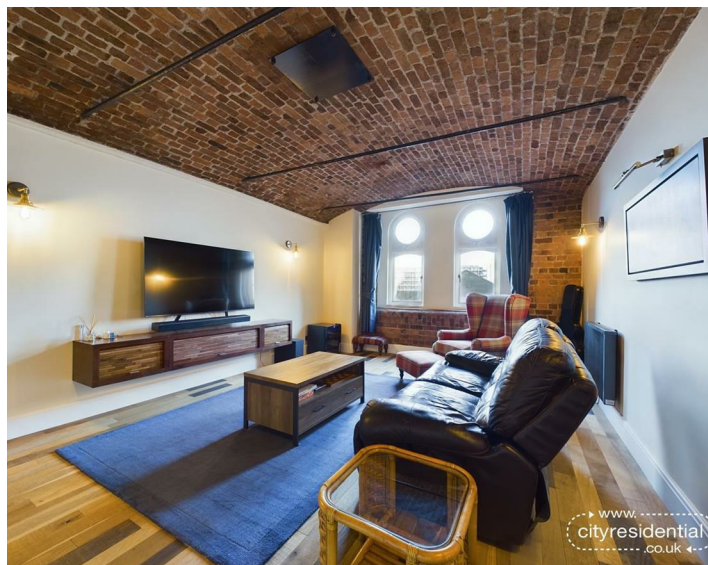




21 Waterloo Warehouse, Liverpool, L3 0BG
Asking Price £270,000 Leasehold

www.
cityresidential
.co.uk



About the Property

Set in the stunning Grade II listed building Waterloo Warehouse and brimming with original period charm is this fantastic two bedroom duplex apartment.

Overlooking Waterloo Dock which forms part of the famous port of Liverpool, this exceptionally sized and beautifully presented apartment will make a fantastic home with its historic features, bringing charm and character throughout.

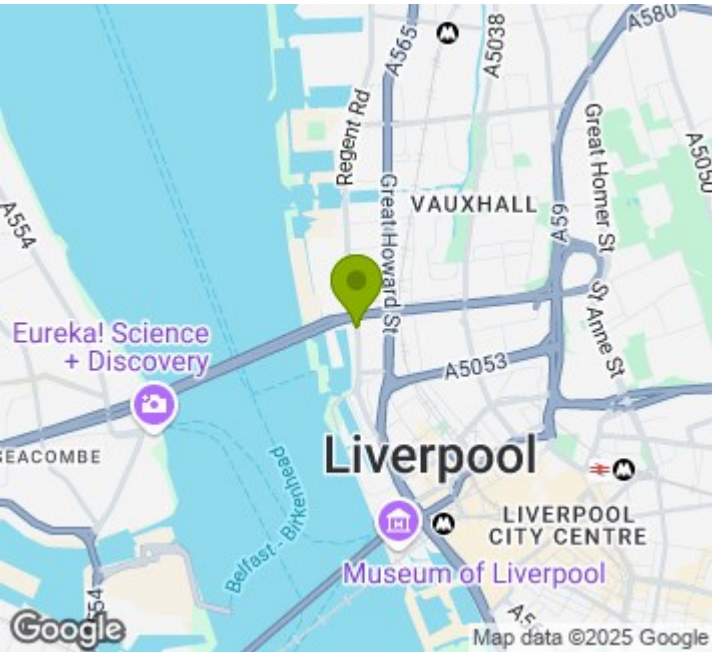
Situated on Waterloo Road, the property provides convenient access to Liverpool City Centre, The Royal Albert dock, and is only a short walk from the exciting new Liverpool Water's development.

As you step into the recently refurbished entrance hall, the stairway leads upstairs to a spacious living and dining space, kitchen, large 2nd bedroom & modernised bathroom. Downstairs, the master bedroom with views across the docks & River Mersey benefits from ample space, and also offers a spacious ensuite bathroom, renovated throughout.

The property further benefits from allocated parking space plus additional visitor's spaces and 24-hour manned security.

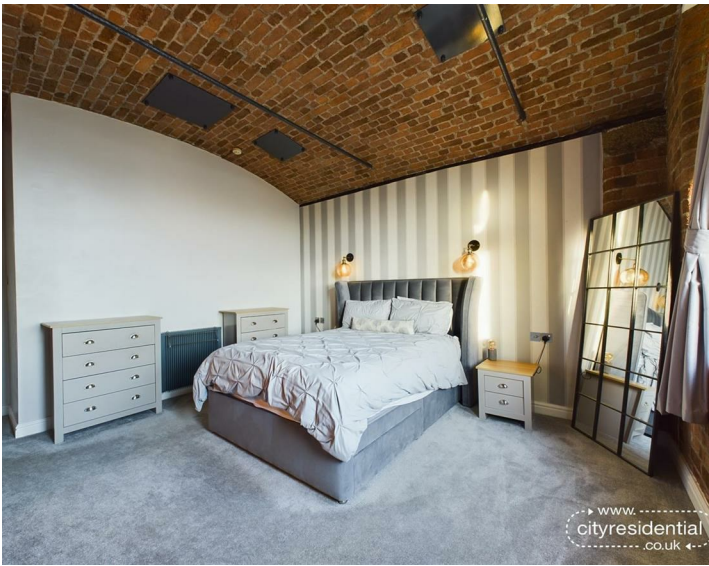
Don't miss out on the opportunity to view this property, call us today to view!

- Stylish waterfront duplex apartment
- Two generously sized bedrooms
- Allocated parking
- River views
- Recently refurbished
- Central location



Energy Efficiency Rating

	Current	Potential
Very energy efficient - lower running costs		
(92 plus) A		
(81-91) B		
(69-80) C		
(55-68) D		
(39-54) E		
(21-38) F		
(1-20) G		
Not energy efficient - higher running costs		
	80	80
England & Wales	EU Directive 2002/91/EC	



City Residential
81/87 Victoria Street, The Old Haymarket, Liverpool L1 6DG
T: 0151 231 6100 F: 0151 231 6105
E: sales@cityresidential.co.uk



WWW.
cityresidential
.co.uk